

Linear Choke, flat design



Description

- Linear choke
- THT-terminals
- Inductor horizontally positioned in housing
- SMD version on request

Standards

- EN 60938

Applications

- Smoothing RFI suppression choke
- RFI suppression choke
- Chopper amplifiers
- DC drives and stepper motor controls
- Switching power supplies

References

Weblinks

[pdf](#), [General Product Information](#), [Approvals](#), [RoHS](#), [CHINA-RoHS](#), [e-Store](#), [SCHURTER-Stock-Check](#), [Distributor-Stock-Check](#)

Technical Data

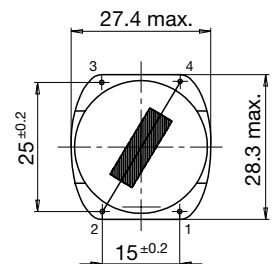
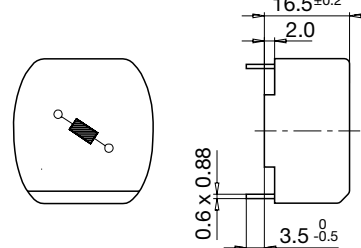
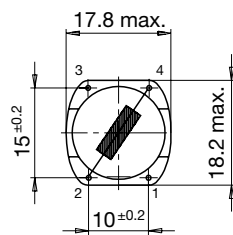
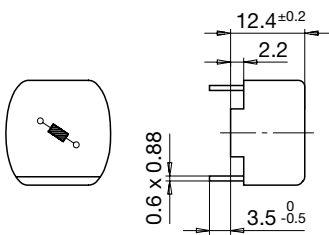
Rated voltage	up to 600VDC
Rated Current	0.4 -A @ Ta 70 °C
Rated inductance	0.015 - 3mH, Tol. ±15%
Power Operating Frequency	up to 20kHz
Terminal technic	THT
Weight	7 - 18g
Material: Housing	UL 94V-0
Sealing Compound	UL 94V-0

Isolation Voltage	2 kV eff., winding to ambient
Climatic Category	40/125/21 acc. to IEC 60068-1
Allowable Operation Temp.	-40°C to 125°C

Dimensions

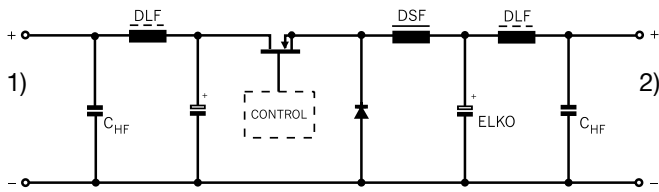
Case 04-1

Case 15-1



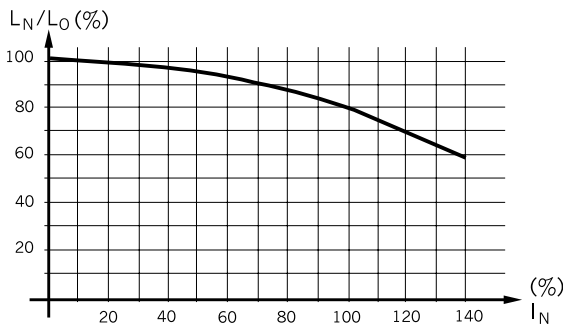
Diagrams

Application in DC-DC Converter



- 1) DC-Input unregulated
- 2) DC-Output regulated

Derating Curves



Inductance variation as function of the magnetizing current

Variants

I_n [A]	L_n [mH]	R_{cu} [mΩ]	f_{RES} [MHz]	Weight [g]	Housing	Packing unit [pcs.]	Order Number
0.4	1.5	2150	0.5	7	04-1	-	DLF-18-0001
0.6	0.65	690	1	7	04-1	-	DLF-18-0002
1.2	0.17	190	2.8	7	04-1	-	DLF-18-0003
1.5	0.11	150	8	7	04-1	-	DLF-18-0004
2	0.06	79	12	7	04-1	-	DLF-18-0005
4	0.015	17	28	7	04-1	-	DLF-18-0006
0.45	3	3300	-	18	15-1	-	DLF-28-0001
0.6	3	1700	0.3	18	15-1	-	DLF-28-0002
1	1	550	0.8	18	15-1	-	DLF-28-0003
1.5	0.5	270	1.2	18	15-1	-	DLF-28-0004
1.8	0.3	180	3.3	18	15-1	-	DLF-28-0005
3	0.1	70	7.5	18	15-1	-	DLF-28-0006
4.5	0.05	30.5	-	18	15-1	-	DLF-28-0007
7	0.02	13	20	18	15-1	-	DLF-28-0008